

Professional solution for industrial remote control

➤ 工業遙控專業解決方案



Contents 目錄

| | |
|-------------|----|
| ➤ F21-2S/D | 05 |
| ➤ F21-4S/D | 07 |
| ➤ F21-E1 | 09 |
| ➤ F21-E1B | 11 |
| ➤ F23-A++ | 17 |
| ➤ F23-BB | 19 |
| ➤ F24-8S/D | 25 |
| ➤ F24-10S/D | 27 |
| ➤ F24-12S/D | 29 |
| ➤ F24-60 | 33 |



Closed circuits



AC/DC Power



Temp. tolerant



IP 65



MODBUS



LR6 AA



➤ F21 SERIES 便捷、經濟、 可廣泛應用于各 種工業設備



防水防塵等級可達IP 65

堅固耐用之玻璃纖維增強外殼結構

超寬範圍-40℃ ~ +85℃之操作溫度

低耗電設計，2個1.5伏特5號（AA Size）鹼性電池平均壽命4個月

結合漢明碼，自我檢測及不重複的32位元識別碼

以WINDOWS平臺的專用軟件可輕易執行多元功能設定

操作距離依機種不同可達50 ~ 100米

Professional solution for industrial remote control

➤ 工業遙控專業解決方案

Convenient, economical. Widely used in various industrial equipment.

Enclosure protection class is IP 65

Durable Glass-Fiber structure

Low consumption, 2 AA batteries last up to 4 months.

Combination with hamming code, self-testing and 32 bits ID codes
With Microsoft Windows based software for easy customize configuration

Control distance is up to 50~100 meters



RECEIVER-F21

MODEL:F21-RXC
ITEM CODE:
921-100-012

- 尺寸 (Size) : 185x85x85mm
- 重量 (Weight) : 550g
- 控制距離: 可達100米
- 安全碼: 43億種以上出廠永不重複
- 使用溫度: -40°C至+85°C
- 防護等級: IP65
- 接收器電源: 交流110V/220V/380V可選擇, 或直流12V/24V/36V/48V
- 輸出觸點容量: 5A培全密封式繼電器輸出 (使用交流250V/10A繼電器, 5A培保險絲)。

- Control distance is up to 100 meters
- Over 4.3 billions unique ID code available.
- Temperature range -40°C~+85°C
- Enclosure protection class IP 65
- Microsoft Windows based software for easy customize configuration
- Structure : Glass-Fiber PA
- Receiver Power Supply: 110/220/380 VAC & 12V/24V/36V/48V DC
- Output contacts capacity: 5A completely sealed relays output (With 250VAC / 10A relays, 5A fuse).

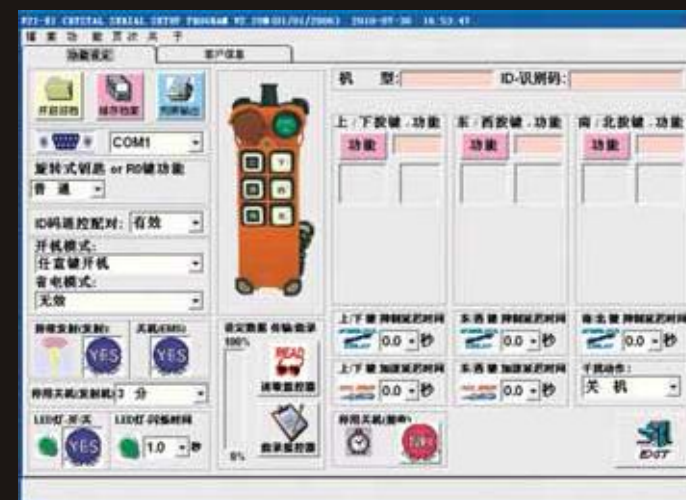
接收器/Receiver: F21-RXC

| | |
|--------------------------------|--|
| 應用領域/ Application areas | 各種升降機, 傳送帶, 絞盤, 液壓裝置, 泵, 工業門, 車庫門等。 Doors, entrances, gates, winches, pumps, crushers, lighting, conveyor belts, hydraulics, a.o. |
| 工作頻段/Working frequency | 315MHz |
| 高頻信道/High-frequency channels | 64 |
| 專用地址碼/ Unique codes | 43億種/4.3 billions |
| 電源/ Power supply | 110/220/380V AC & 12V/24V/36V/48V DC |
| 功率消耗/ Power consumption | 20-400mA |
| 防護等級/ Protection | IP65 |
| 使用溫度/ Temperature | -40°C ~ +85°C |
| 工作距離/Control distance | 約100米/Approx 100 M |
| 推薦發射器/ Recommended transmitter | F21系列發射器/F21 series transmitters |

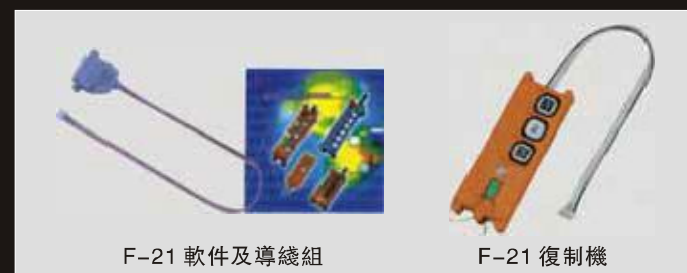
Professional solution for industrial remote control

工業遙控專業解決方案

F21 SERIES 軟體設定 (Software Setting)



- 軟件的特點: 以WINDOWS平臺的專用軟件可輕易執行多功能設定
- FEATURES: Microsoft Windows based software for easy customize configuration



F-21 軟件及導線組

F-21 復制機





MOEDL:F21-2S-TX
ITEM CODE:
921-002-001

MOEDL:F21-2D-TX
ITEM CODE:
921-002-002

Transmitter
Dimension:
130 x 45 x 22 mm
Weight:
60g(without batteries)
發射器
尺寸:130 x 45 x 22毫米
重量: 60g(不帶電池)



- 接收機自帶1米連接電纜
- 操作及維護手冊1本

適用於：單鉤、單速電動葫蘆或葫蘆式行車及4個接點以下的工業控制遙控用。

F21-2S/D FEATURES



2 single step pushbuttons

1 key magnetic

Low cost, low consumption: 2 AA batteries last up to 4 months

Safety code: over 4.3 billions unique ID code available.

Temperature range: -40°C~+85°C

Enclosure protection class: IP 65

Microsoft Windows based software for easy customize configuration

Structure: Glass-Fiber PA

- Two operation buttons and one stop button
- 4 control contacts
- With battery voltage warning device, the power is cut off during low power.
- Safety key switch to prevent from unauthorized user.
- Set the internal functions by computer interface.
- 3 operation buttons can be set as to mutual inhibition or not.

Spare key can be set to start, acceleration, toggle switch, general or other functions.

Control distance is up to 100 meters

Transmitter power: 3V DC (2 AA batteries last up to 4 months)

Receiver power: 380V/220V/110V AC, or 12V/24V/36V/48V DC

Output contact capacity: 5A sealed relay output (AC 250V/10A relays, 5A fuse contacts).

Standard Configuration:

- One transmitter
- One receiver
- Receiver with 1 meter cable
- Operation and maintenance manual

Application: Single-hook, single-speed electric hoist or hoist-type traffic and industrial remote control with less than 4 contacts

F21-2S/D 產品特點

兩個單速按鍵

一個磁性開關

低成本，低耗能，2節鹼性5號電池可使用4個月。

安全碼：43億種以上可用。

溫度範圍：-40°C~+85°C

防護等級：IP 65

軟件可使自定義配置簡單易行。

材質：玻璃纖維增強尼龍

- 具有2祇操作按鍵，外加1祇停止按鍵
- 控制點數達4個
- 帶有電池電壓警示裝置，在電壓不足時能自行切斷電路。
- 安全鑰匙開關，防止未授權者使用。
- 可由電腦接口設定內部功能
- 三個動作按鍵可設定為是否互相抑制。

備用1鍵可設定為開機、加速、捺跳、普通等功能。

控制距離：可達100米

發射器電源：直流3V（2節鹼性5號電池可使用4個月）

接收器電源：交流380V/220V/110V可選擇，或直流12V/24V/36V/48V

輸出觸點容量：5安培全密封式繼電器輸出（使用交流250V/10A繼電器，5安培保險絲）。

標準配置：

- 發射器1支(含背帶)
- 接收機1部



MOEDL:F21-4S-TX
ITEM CODE:
921-004-001

MOEDL:F21-4D-TX
ITEM CODE:
921-004-002

Transmitter
Dimension:
 156 x 61 x 51 mm
Weight:
 320g(without batteries)
發射器
 尺寸:156 x 61 x 51 mm
 重量: 320g(不帶電池)

➤ F21-4S/D 產品特點

4個單速按鍵

1個總停

1個旋轉開關

低成本，低耗能，2節鹼性5號電池可使用4個月。

安全碼：43億種以上可用。

溫度範圍：-40℃~+85℃

防護等級：IP 65

軟件可使自定義配置簡單易行。

材質：玻璃纖維增強尼龍

◆ 帶有電池電壓警示裝置，在電壓不足時能自行切斷電路。

◆ 安全鑰匙開關，防止未授權者使用。

◆ 可由電腦接口設定內部功能

控制距離：可達100米

發射器電源：直流3V（2節鹼性5號電池可使用4個月）

接收器電源：交流380V/220V/110V可選擇，或直流12V/24V/36V/48V

輸出觸點容量：5安培全密封式繼電器輸出（使用交流250V/10A繼電器5安培保險絲）。

標準配置：

◆ 發射器1支(含背帶)

◆ 接收機1部

◆ 接收機自帶1米連接電纜

◆ 操作及維護手冊1本

適用於：單鉤、單速電動葫蘆或葫蘆式行車

F21-4S/D FEATURES

4 single step

1 EMS "STOP"

1 rotary start key

Low cost, low consumption: 2 AA batteries last up to 4 months

Safety code: over 4.3 billions unique ID code available

Temperature range: -40℃~+85℃

Enclosure protection class: IP 65

Microsoft Windows based software for easy customize configuration

Structure: Glass-Fiber PA

- ◆ With battery voltage warning device, the power is cut off during low power
- ◆ Safety key switch to prevent from unauthorized user.
- ◆ Set the internal functions by computer interface as to mutual inhibition or not.

Control distance is up to 100 meters

Transmitter power: 3V DC (2 AA batteries last up to 4 months)

Receiver power: 380V/220V/110V AC, or 12V/24V/36V/48V DC

Output contact capacity: 5A sealed relay output (AC 250V/10A relays, 5A fuse contacts).

Standard Configuration:

- ◆ One transmitter
- ◆ One receiver
- ◆ Receiver with 1 meter cable
- ◆ Operation and maintenance manual

Application: Single-hook, single-speed electric hoist or hoist-type traffic



MOEDL:F21-E1-TX
ITEM CODE:
921-006-001

Transmitter
Dimension:
156 x 61 x 51 mm
Weight:
320g(without batteries)
發射器
尺寸:156 x 61 x 51 mm
重量: 320g(不帶電池)

F21-E1 FEATURES

6 single step pushbuttons

Low cost, low consumption: 2 AA batteries last up to 4 months

Safety code: over 4.3 billions unique ID code available

Temperature range: -40°C~+85°C

Enclosure protection class: IP 65

Microsoft Windows based software for easy customize configuration

Structure: Glass-Fiber PA

- ▶ With battery voltage warning device, the power is cut off during low power.
- ▶ Safety key switch to prevent from unauthorized user
- ▶ Set the internal functions by computer interface.
- ▶ Up/down, east/west, north/south can be set as to mutual inhibition or not.
- ▶ Spare key can be set to start, acceleration, toggle switch, general or other functions.

Control distance is up to 100 meters

Transmitter power: 3V DC (2 AA batteries last up to 4 months)

Receiver power: 380V/220V/110V AC, or 12V/24V/36V/48V DC

Output contact capacity: 5A sealed relay output (AC 250V/10A relays, 5A fuse contacts).

Standard Configuration:

- ▶ One transmitter
- ▶ One receiver
- ▶ Receiver with 1 meter cable
- ▶ Operation and maintenance manual

Application: Single-hook, single-speed electric hoist or hoist-type traffic and industrial remote control with less than 9 contacts

▶ F21-E1 產品特點

6祇單速按鍵

低成本、低耗能，2節鹼性5號電池可使用4個月。

安全碼：43億種以上可用。

溫度範圍：-40°C~+85°C

防護等級：IP 65

軟件可使自定義配置簡單易行。

材質：玻璃纖維增強尼龍

- ▶ 帶有電池電壓警示裝置，在電壓不足時能自行切斷電路。
- ▶ 安全鑰匙開關，防止未授權者使用。
- ▶ 可由電腦接口設定內部功能
- ▶ 上/下、東/西、南/北可設定為是否互相抑制。
- ▶ 備用1鍵可設定為開機、加速、擦跳、普通等功能。

控制距離：可達100米

發射器電源：直流3V（2節鹼性5號電池可使用4個月）

接收器電源：交流380V/220V/110V可選擇，或直流12V/24V/36V/48V

輸出觸點容量：5安培全密封式繼電器輸出（使用交流250V/10A繼電器，5安培保險絲）。

標準配置：

- ▶ 發射器1支(含背帶)
- ▶ 接收機1部
- ▶ 接收機自帶1米連接電纜
- ▶ 操作及維護手冊1本

適用於：單鉤、單速電動葫蘆或葫蘆式行車及9個接點以下的工業控制遙控用。



MOEDL:F21-E1B-TX
ITEM CODE:
921-006-101

Transmitter
Dimensions: 164 x 75 x 46 mm
Weight: 380g
(without batteries)
發射器
尺寸:164 x 75 x 46毫米
重量: 380g(不帶電池)

F21-E1B FEATURES



Low cost, low consumption: 2 AA batteries last up to 4 months

Safety code: over 4.3 billions unique ID code available

Temperature range: -40°C~+85°C

Enclosure protection class: IP 65

Microsoft Windows based software for easy customize configuration

Structure: Glass-Fiber PA

- ✪ Eight operation buttons, seven single-speed buttons and one "STOP" .
- ✪ 9 commands
- ✪ With battery voltage warning device, the power is cut off during low power.
- ✪ Safety key switch to prevent from unauthorized user
- ✪ Set the internal functions by computer interface.
- ✪ Up/down, east/west, north/south can be set as to mutual inhibition or not.
- ✪ Spare key can be set to start, acceleration, toggle switch, general or other functions.

Control distance is up to 100 meters

Transmitter power: 3V DC (2 AA batteries last up to 4 months)

Receiver power: 380V/220V/110V AC, or 12V/24V/36V/48V DC

Output contact capacity: 5A sealed relay output (AC 250V/10A relays, 5A fuse contacts).

Standard Configuration:

- ✪ One transmitter
- ✪ One receiver
- ✪ Receiver with 1 meter cable
- ✪ Operation and maintenance manual

Application: Single-hook, single-speed electric hoist or hoist-type traffic and industrial remote control with less than 9 contacts

➤ F21-E1B 產品特點

低成本、低耗能，2節鹼性5號電池可使用4個月。

安全碼：43億種以上可用。

溫度範圍：-40°C~+85°C

防護等級：IP 65

軟件可使自定義配置簡單易行。

材質：玻璃纖維增強尼龍

- ✪ 具有8祇操作按鍵，其中7祇單速按鍵，1祇總停
- ✪ 控制點數達9個
- ✪ 帶有電池電壓警示裝置，在電壓不足時能自行切斷電路。
- ✪ 安全鑰匙開關，防止未授權者使用。
- ✪ 可由電腦接口設定內部功能
- ✪ 上/下、東/西、南/北可設定為是否互相抑制。
- ✪ 備用1鍵可設定為開機、加速、捺跳、普通等功能。

控制距離：可達100米

發射器電源：直流3V（2節鹼性5號電池可使用4個月）

接收器電源：交流380V/220V/110V可選擇，或直流12V/24V/36V/48V

輸出觸點容量：5安培全密封式繼電器輸出（使用交流250V/10A繼電器，5安培保險絲）。。

標準配置：

- ✪ 發射器1支(含背帶)
- ✪ 接收機1部
- ✪ 接收機自帶1米連接電纜
- ✪ 操作及維護手冊1本

適用於：單鉤、單速電動葫蘆或葫蘆式行車及9個接點以下的工業控制遙控用。



➤ F23 SERIES 精巧、彈性化設計、可自行DIY組裝



IP65防水防塵等級

低耗電（使用兩顆AA鹼性電池平均使用壽命可達2個月）。

操作功能均可透過F-23軟體做設定（與Microsoft Windows相容）。

操作距離可達100米

接收機均為內藏式天線（接收機可另行加裝附件：被動天線）

透過新的彈性化設計可自行組裝及設定（DIY）

多重安全保護設計的漢明碼及32位元不重複識別碼。

工作溫度範圍可達-40℃ ~ +85℃

透過彈性化設計，本工業用無線電遙控器之接點輸出，可依照使用者實際需求自行規劃設計。

不論是總電源（MAIN），共線（COM）或是繼電器之常開/常閉接點都可自由跳接。

Professional solution for industrial remote control

⊗ 工業遙控專業解決方案

Light, flexible design for DIY installation

Enclosure protection class is IP 65

Low power consumption 2 AA batteries last up to 2 months

Operation functions can be set by F-23 software (compatible with Microsoft Windows)

Control distance is up to 100 meters

Receivers are with built-in antenna (receiver can be installed with additional accessories: passive antenna)

New flexible design for self-assemble and setting

Multiple safety of hamming code and 32 bits unique ID codes

Temperature range: -40℃ ~ +85℃

New flexible design for customized contact outputs of the industrial remote control. Main power (MAIN), common line (COM) or relays' NO/NC contacts can be freely connected with jumpers.



RECEIVER-F23

MODEL:F23-RXC

ITEM CODE:

923-100-012



- 尺寸 (Size) : 172x166x87mm
- 重量 (Weight) : 900g
- 控制距離：可達100米
- 安全碼：43億種以上出廠永不重複
- 使用溫度：-40℃至+85℃
- 防護等級：IP65
- 接收器電源：交流110V/220V/380V可選擇，或直流12V/24V/36V/48V
- 輸出觸點容量：5安培全密封式繼電器輸出（使用交流250V/10A繼電器，5安培保險絲）。
- Over 4.3 billions unique ID code available.
- Temperature range -40℃~+85℃
- Enclosure protection class IP 65
- Microsoft Windows based software for easy customize configuration
- Structure : Glass-Fiber PA
- Receiver Power Supply: 110/220/380 VAC & 12V/24V/36V/48V DC
- Output contacts capacity: 5A completely sealed relays output (With 250VAC / 10A relays, 5A fuse).

| 接收器/Receiver: F23-RXC | |
|--------------------------------|--|
| 應用領域/ Application areas | 各種升降機，傳送帶，絞盤，液壓裝置，泵，工業門，車庫門等。 Doors, entrances, gates, winches, pumps, crushers, lighting, conveyor belts, hydraulics, a.o. |
| 工作頻段/Working frequency | 315MHz |
| 高頻信道/High-frequency channels | 80 |
| 專用地址碼/ Unique codes | 43億種/4.3 billions |
| 電源/ Power supply | 110/220/380V AC & 12V/24V/36V/48V DC |
| 功率消耗/ Power consumption | 20-400mA |
| 防護等級/ Protection | IP65 |
| 使用溫度/ Temperature | -40℃ ~ +85℃ |
| 工作距離/Control distance | 約100 米/Approx 100 M |
| 推薦發射器/ Recommended transmitter | F23系列發射器/F23 series transmitters |

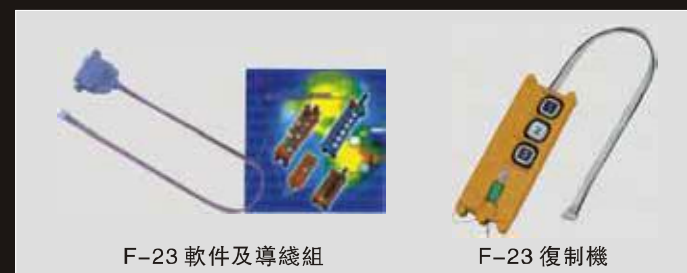
Professional solution for industrial remote control

工業遙控專業解決方案

F23 SERIES 軟體設定(Software Setting)



- 軟件的特點：以WINDOWS平臺的專用軟件可輕易執行多功能設定
- FEATURES:Microsoft Windows based software for easy customize configuration



F-23 軟件及導線組

F-23 復制機





MOEDL:F23-A++-TX
ITEM CODE:
923-010-101

Transmitter
Dimension:
164 x 75 x 46 mm
Weight:
315g(without batteries)
發射器
尺寸:164 x 75 x 46毫米
重量: 315g(不帶電池)

F23-A++ FEATURES



Low power consumption transmitter (2 AA batteries last up to 4 month)
Over 4.3 billions unique ID code available.

Temperature range: -40°C~+85°C

Microsoft Windows based software for easy customize configuration

Structure: Glass-Fibre PA

- 10 single step pushbuttons(disabled NO. 3 and NO.4 buttons)
- 11 commands
- With battery voltage warning device, the power is cut off during low power.
- Safety key switch to prevent from unauthorized user
- Up/down, east/west, north/south can be set as to mutual inhibition or not.
- Power key can be set to start, acceleration, toggle switch, general or other functions.
- Spare No.1 and NO.2 keys can be set to general, interlocking, toggle switch, on/off or other functions

Control distance is up to 100 meters

Transmitter power: 3V DC (2 AA batteries last up to 4 months)

Receiver power: 380V/220V/110V AC, or 12V/24V/36V/48V DC.

Output contact capacity: 5A sealed relay output (AC 250V/10A relays, 5A fuse contacts).

Standard Configuration:

- One transmitt
- One receiver
- Receiver with 1 meter cable
- Operation and maintenance manual

Application: MD double-speed electric hoist or double-speed, double-hook/single-speed traveling crane and industrial remote control with less than 11 contacts

➤ F23-A++ 產品特點

低耗能，2節鹼性5號電池可使用4個月。

安全碼：43億種以上可用。

溫度範圍：-40°C~+85°C

防護等級：IP 65

軟件可使自定義配置簡單易行。

材質：玻璃纖維增強尼龍

- 10祇單速按鍵(3號、4號鍵無效)
- 控制點數達11個
- 帶有電池電壓警示裝置，在電壓不足時能自行切斷電路。
- 安全鑰匙開關，防止未授權者使用。安全鑰匙開關，防止未授權者使用。
- 上/下、東/西、南/北可設定為是否互相抑制。
- 開機鍵可由電腦設定為開機、加速、擦跳、普通等功能。
- 備用1-2號鍵可由電腦設定為普通、互鎖、擦跳、開關等功能

控制距離：可達100米

發射器電源：直流3V（2節鹼性5號電池可使用4個月）

接收器電源：交流380V/220V/110V可選擇，或直流12V/24V/36V/48V

輸出觸點容量：5安培全密封式繼電器輸出（使用交流250V/10A繼電器，5安培保險絲）。

標準配置：

- 發射器1支(含背帶)
- 接收機1部
- 接收機自帶1米連接電纜
- 操作及維護手冊1本

適用於：MD雙速電動葫蘆或吊鉤雙速、雙鉤/單速行車及11個接點以下的工業控制遙控用。



MOEDL:F23-BB-TX
ITEM CODE:
923-012-101

Transmitter
Dimension:
164 x 75 x 46 mm
Weight:
315g(without batteries)
發射器
尺寸:164 x 75 x 46毫米
重量: 315g(不帶電池)

F23-BB FEATURES



➤ F23-BB 產品特點

- 12 祇單速按鍵
- 控制點數達13個
- 帶有電池電壓警示裝置，在電壓不足時能自行切斷電路。
- 安全鑰匙開關，防止未授權者使用。安全鑰匙開關，防止未授權者使用。
- 上/下、東/西、南/北可設定為是否互相抑制。
- 開機鍵可由電腦設定為開機、加速、擦跳、普通等功能。
- 備用1-4號鍵可由電腦設定為普通、互鎖、擦跳、開關等功能。

控制距離：可達100米

安全碼：32位元（43億組）

溫度範圍：-40℃~+85℃

防護等級：IP 65

發射器電源：直流3V（2節鹼性5號電池可使用4個月）

接收器電源：交流380V/220V/110V可選擇，或直流12V/24V/36V/48V

輸出觸點容量：5安培全密封式繼電器輸出（使用交流250V/10A繼電器，5安培保險絲）。

材質：玻璃纖維增強尼龍

標準配置：

- 發射器1支(含背帶)
- 接收機1部
- 接收機自帶1米連接電纜
- 操作及維護手冊1本

適用於：單鉤多速、雙鉤單速、雙鉤/多速行車及16個接點以下的工業控制遙控用。

- 12 single step pushbuttons
- 13 commands With battery voltage warning device, the power is cut off during low power.
- Safety key switch to prevent from unauthorized user
- Up/down, east/west, north/south can be set as to mutual inhibition or not.
- Power key can be set to start, acceleration, toggle switch, general or other functions.
- Spare No.1 to No.4 keys can be set to general, interlocking, toggle switch, on/off or other functions

Control distance is up to 100 meters

Safety code: 32 bits(4.3 billions group)

Temperature range: -40℃~+85℃

Enclosure protection class: IP 65

Transmitter power: 3V DC (2 AA batteries last up to 4 months)

Receiver power: 380V/220V/110V AC, or 12V/24V/36V/48V DC.

Output contact capacity: 5A sealed relay output (AC 250V/10A relays, 5A fuse contacts).

Structure: Glass-Fibre PA

Standard Configuration:

- One transmitter
- One receiver
- Receiver with 1 meter cable
- Operation and maintenance manual

Application: Multi-speed single-hook, double-hook single speed, double-hook/multi-speed travelling crane and industrial remote control with less than 16 contacts



➤ F24 SERIES 輕巧、耐用、安全穩定



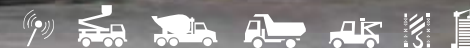
尼龍加纖的強化塑料外殼，可防止摔落及強力碰撞所造成之損壞。
IP65防水防塵等級。
全系列硬體/軟體完全相容，可節省庫存支出。
低耗電（使用兩顆AA鹼性電池平均使用壽命可達2個月）。
可經由PC軟體設定多種按鍵功能，能完全滿足各種操作需求。
接收機含輸出電纜線，安裝簡單、快速。
多重安全保護設計：漢明碼、看門狗綫路、32位元不重複識別碼。

Professional solution for industrial remote control

⊗ 工業遙控專業解決方案

Light, durable, safe and stable

Nylon reinforced plastic structure prevents from damaging caused by falling and collision
Enclosure protection class is IP 65
The whole systems of hardware and software are fully compatible to save stock cost.
Low power consumption 2 AA batteries last up to 2 months
PC software to carry out multiple functions, setting to meet various needs
With output cable, the receiver can be installed easily and fast
Multiple safety: hamming code, watch-dog and 32 bits unique ID codes



RECEIVER-F24

MODEL:F24-RXC
ITEM CODE:
924-100-012



- 尺寸 (Size) : 200x162x107mm
- 重量 (Weight) : 1220g
- 控制距離: 可達100米
- 安全碼: 43億種以上出廠永不重複
- 使用溫度: -40°C至+85°C
- 防護等級: IP65
- 接收器電源: 交流110V/220V/380V可選擇, 或直流12V/24V/36V/48V
- 輸出觸點容量: 5安培全密封式繼電器輸出 (使用交流250V/10A繼電器, 5安培保險絲)。
- Over 4.3 billions unique ID code available.
- Temperature range -40°C~+85°C
- Enclosure protection class IP 65
- Microsoft Windows based software for easy customize configuration
- Structure : Glass-Fiber
- Receiver Power Supply: 110/220/380 VAC & 12V/24V/36V/48V DC
- Output contacts capacity: 5A completely sealed relays output (With 250VAC / 10A relays, 5A fuse).

接收器/Receiver: F24-RXC

| | |
|--------------------------------|--|
| 應用領域/ Application areas | 各種升降機, 傳送帶, 絞盤, 液壓裝置, 泵, 工業門, 車庫門等。 Doors, entrances, gates, winches, pumps, crushers, lighting, conveyor belts, hydraulics, a.o. |
| 工作頻段/Working frequency | 315MHz |
| 高頻信道/High-frequency channels | 80 |
| 專用地址碼/ Unique codes | 43億種/4.3 billions |
| 電源/ Power supply | 110/220/380 VAC & 12V/24V/36V/48V DC |
| 功率消耗/ Power consumption | 20~400mA |
| 防護等級/ Protection | IP65 |
| 使用溫度/ Temperature | -40°C ~ +85°C |
| 工作距離/Control distance | 約100 米/Approx 100 M |
| 推薦發射器/ Recommended transmitter | F24系列發射器/F24 series transmitters |

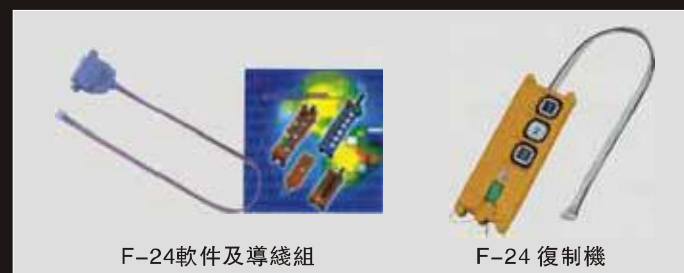
Professional solution for industrial remote control

工業遙控專業解決方案

F24 SERIES 軟體設定 (Software Setting)



- 軟件的特點: 以WINDOWS平臺的專用軟件可輕易執行多功能設定
- FEATURES: Microsoft Windows based software for easy customize configuration



MOEDL:F24-8S-TX
ITEM CODE:
924-008-001

MOEDL:F24-8D-TX
ITEM CODE:
924-008-002

Transmitter
Dimension:
186 x 61 x 51 mm
Weight: 255g
發射器
尺寸: 186 x 61 x 51 mm
重量: 255g

F24-8S/D

產品特點

- 8祇功能按鍵(D兩段式按鍵)+蘑菇頭急停+啓動鑰匙+備用
- 控制點數達19個 (F24-8D)
- 帶有電池電壓警示裝置，在電壓不足時能自行切斷電路。
- 安全旋轉鑰匙開關，防止未授權者使用。
- 尼龍加織的強化塑膠外殼，可防止摔落及強力碰撞所造成的損壞。
- 上/下、東/西、南/北可設定為是否相互抑制。
- 開機鍵可由電腦設定為開機、加速、捺跳、普通等功能。
- 備用1-2號鍵可由電腦設定為普通、互鎖、捺跳、開關等功能

控制距離：可達100米

安全碼：32位元 (43億組)

溫度範圍：-40°C~+85°C

防護等級：IP 65

發射器電源：直流3V (2節鹼性5號電池可使用4個月)

接收器電源：交流380V/220V/110V可選擇，或直流12V/24V/36V/48V

輸出觸點容量：5安培全密封式繼電器輸出 (使用交流250V/10A繼電器，5安培保險絲)。

安全特徵：

43億無重複代碼

漢明代碼

加強安全狗電路

標準配置：

- 發射器1支(含背帶)
- 接收機1部
- 接收機自帶1米連接電纜
- 操作及維護手冊1本

適用於：單速或雙速行車及19個 (F24-8D) 接點以下的工業控制遙控用。



F24-8S/D FEATURES

- ◆ 8 single/double step operation pushbuttons+EMERGENCY STOP+ SPARE KEY + SPARE
- ◆ 19 commands (F24-8D)
- ◆ With battery voltage warning device, the power is cut off during low power.
- ◆ Safety key switch to prevent from unauthorized user
- ◆ Durable nylon-fiber housing for extra shock resistance
- ◆ Up/down, east/west, north/south can be set as to mutual inhibition or not.
- ◆ Power key can be set to start, acceleration, toggle switch, general or other functions through computer.

Spare No.1 and NO.2 keys can be set to general, interlocking, toggle switch, on/off or other functions through computer

Control distance is up to 100 meters

Safety code: 32 bits(4.3 billions group)

Temperature range: -40°C~+85°C

Enclosure protection class: IP 65

Transmitter power: 3V DC (2 AA batteries last up to 4 month)

Receiver power: 380V/220V/110V AC, or 12V/24V/36V/48V DC.

Output contact capacity: 5A sealed relay output (AC 250V/10A relays, 5A fuse contacts).

Safety features:

4.3 billion unique ID code

Hamming code

Enhanced watch-dog circuit

Standard Configuration:

- ◆ One transmitter
- ◆ One receiver
- ◆ Receiver with 1 meter cable
- ◆ Operation and maintenance manual

Application: Double-speed or single-speed traveling crane and industrial remote control with less than 19 contacts (F24-8D)



MOEDL:F24-10S-TX Transmitter
ITEM CODE:
924-010-001

MOEDL:F24-10D-TX
ITEM CODE:
924-010-002

Dimension:
186 x 61 x 51 mm

Weight: 255g

發射器
尺寸: 186 x 61 x 51 毫米
重量: 255g



F24-10S/D

產品特點

10個單/雙速按鍵

一鍵總停

一個開關鍵

- 10祇功能按鍵(D兩段式按鍵) + 蘑菇頭急停 + 啟動鑰匙 + 備用
- 控制點數達 23個 (F24-10D)
- 帶有電池電壓警示裝置，在電壓不足時能自行切斷電路。
- 安全旋轉鑰匙開關，防止未授權者使用。
- 尼龍加織的強化塑膠外殼，可防止摔落及強力碰撞所造成的損壞。
- 上/下、東/西、南/北可設定為是否相互抑制。
- 開機鍵可由電腦設定為開機、加速、擦跳、普通等功能。

備用1-2號鍵可由電腦設定為普通、互鎖、擦跳、開關等功能

控制距離：可達100米

安全碼：32位元 (43億組)

溫度範圍：-40°C~+85°C

防護等級：IP 65

發射器電源：直流3V (2節鹼性5號電池可使用4個月)

接收器電源：交流380V/220V/110V可選擇，或直流12V/24V/36V/48V

輸出觸點容量：5安培全密封式繼電器輸出 (使用交流250V/10A繼電器，5安培保險絲)。

安全特徵：

43億無重複代碼

漢明代碼

加強安全狗電路



標準配置：

- 發射器1支(含背帶)
- 接收機1部
- 接收機自帶1米連接電纜
- 操作及維護手冊1本

適用於：單速或雙速行車及12個接點以下的工業控制遙控用。

F24-10S/D FEATURES

10 single/double pushbuttons

1 EMS"STOP"

1 key start "off/on"

1 buttons start/horn

- 10 single/double step operation pushbuttons + EMERGENCY STOP + START EKY + SPARE
- 23 Commands (F24-10D)
- With battery voltage warning device, the power is cut off during low power.
- Safety key switch to prevent from unauthorized user
- Durable nylon-fiber housing for extra shock resistance
- Up/down, east/west, north/south can be set as to mutual inhibition or not.
- Power key can be set to start, acceleration, toggle switch, general or other functions through computer.

Spare No.1 and NO.2 keys can be set to general, interlocking, toggle switch, on/off or other functions through computer

Control distance is up to 100 meters

Safety code: 32 bits(4.3 billions group)

Temperature range: -40°C~+85°C

Enclosure protection class: IP 65

Transmitter power: 3V DC (2 AA batteries last up to 4 month)

Receiver power: 380V/220V/110V AC, or 12V/24V/36V/48V DC.

Output contact capacity: 5A sealed relay output (AC 250V/10A relays, 5A fuse contacts).

Safety features:

4.3 billion unique ID code

Hamming code

Enhanced watch-dog circuit

Standard Configuration:

- One transmitter
- One receiver
- Receiver with 1 meter cable
- Operation and maintenance manual

Application: Double-speed or single-speed traveling crane and industrial remote control with less than 12 contacts



MOEDL:F24-12S-TX Transmitter
ITEM CODE:
924-012-001
Dimension:
186 x 61 x 51 mm
Weight: 255g
MOEDL:F24-12D-TX Receiver
ITEM CODE:
924-012-002
尺寸: 186 x 61 x 51 毫米
重量: 255g

F24-12S/D

產品特點

12個單/雙速按鍵

一鍵總停

一個鑰匙開關

一鍵開啓/喇叭

一個備用鍵

- 12祇功能按鍵 + 蘑菇頭急停 + 啓動鑰匙
- 控制點數達14/25個
- 帶有電池電壓警示裝置，在電壓不足時能自行切斷電路。
- 安全旋轉鑰匙開關，防止未授權者使用。
- 尼龍加織的強化塑膠外殼，可防止摔落及強力碰撞所造成的損壞。
- 上/下、東/西、南/北可設定爲是否相互抑制。
- 備用1-6號鍵可由接收電腦設定爲普通、互鎖、捺跳、開關等功能。

控制距離：可達100米

安全碼：32位元（43億組）

溫度範圍：-40°C~+85°C

防護等級：IP 65

發射器電源：直流3V（2節鹼性5號電池可使用4個月）

接收器電源：交流380V/220V/110V 或直流12V/24V/36V/48V

輸出觸點容量：5安培全密封式繼電器輸出（使用交流250V/10A繼電器，5安培保險絲）。

安全特徵

43億無重複代碼

漢明代碼

加強安全狗電路



標準配置：

- 發射器1支(含背帶)
- 接收機1部
- 接收機自帶1米連接電纜
- 操作及維護手冊1本

適用於：雙鉤/單速、單鉤/多速行車及14個接點以下的工業控制遙控用。

F24-12S/D FEATURES

12 single/double pushbuttons

1 EMS"STOP"

1 key start "off/on"

1 buttons start/horn

1 buttons "Aux"

- 12 single/double pushbuttons + EMERGENCY STOP + START EKY
- 14/25 commands
- With battery voltage warning device, the power is cut off during low power.
- Safety key switch to prevent from unauthorized user
- Durable nylon-fiber housing for extra shock resistance
- Up/down, east/west, north/south can be set as to mutual inhibition or not.
- Spare No.1 to NO.6 keys can be set to general, interlocking, toggle switch, on/off or other functions through computer

Control distance is up to 100 meters

Safety code: 32 bits(4.3 billions group)

Temperature range: -40°C~+85°C

Enclosure protection class: IP 65

Transmitter power: 3V DC (2 AA batteries last up to 4 month)

Receiver power: 380V/220V/110V AC, or 12V/24V/36V/48V DC.

Output contact capacity: 5A sealed relay output (AC 250V/10A relays, 5A fuse contacts).

Safety features:

- 4.3 billion unique ID code
- Hamming code
- Enhanced watch-dog circuit

Standard Configuration:

- One transmitter
- One receiver
- Receiver with 1 meter cable
- Operation and maintenance manual

Application: Double-hook/single-speed, single-hook/multi-speed traveling crane and industrial remote control with less than 14 contacts



RECEIVER F24-60RXC

MODEL:F24-60RXC

ITEM CODE:

924-600-012



- ✦ 尺寸 (Size) : 290x230x70mm
- ✦ 重量 (Weight) : 2200g
- ✦ 控制距離: 可達100米
- ✦ 安全碼: 43億種以上出廠永不重複
- ✦ 使用溫度: -40°C至+85°C
- ✦ 防護等級: IP65
- ✦ 接收器電源: 交流110V/220V/380V可選擇, 或直流12V/24V/36V/48V
- ✦ 輸出觸點容量: 5安培全密封式繼電器輸出 (使用交流250V/10A繼電器, 5安培保險絲)。
- ✦ Over 4.3 billions unique ID code available.
- ✦ Temperature range -40°C~+85°C
- ✦ Enclosure protection class IP 65
- ✦ Microsoft Windows based software for easy customize configuration
- ✦ Structure : Glass-Fiber PA
- ✦ Receiver Power Supply: 110/220/380 VAC & 12V/24V/36V/48V DC
- ✦ Output contacts capacity: 5A completely sealed relays output (With 250VAC / 10A relays, 5A fuse).

Professional solution for industrial remote control

➤ 工業遙控專業解決方案

F24-60 軟體設定 (Software Setting)



- ✦ 軟件的特點: 以WINDOWS平臺的專用軟件可輕易執行多功能設定
- ✦ FEATURES: Microsoft Windows based software for easy customize configuration



F24-60 產品特點

Transmitter
Dimension:
210 x 110 x 90 mm
Weight: 860g
發射器
尺寸: 200x110x90mm
重量: 約860克

MOEDL:F24-60-TX
ITEM CODE:
924-600-001



F24-60雙搖杆遙控器是目前市面上最先進的行程遙控器之一，它是由超過21年歷史、銷售業績高達50萬臺的ISO9001工廠研發生產。

F24-60超強安全設計，超過43億種永不重複安全碼、故障自我診斷、以及頻率自動鎖定追蹤等，均是首屈一指全球獨創。即使鑰匙未插入，急停按鈕仍然有效。開關/搖杆/繼電器及其它組件故障時自動停止，且無法再開機。

F24-60擁有非凡的通訊設計，同步編碼碼傳輸，具備軟件消除干擾、偵錯、校正功能，手動更換數碼數百組頻率，可由電腦/拷貝機直接更改所有功能設定

F24-60大量可程式化功能及可擴充性，使用Microsoft Windows相容軟件，可規劃繼電器接點輸出及比例式綫性/對數響應等，均已設計在內。甚至可以在更新版本軟件推出時免費升級，改良現有行程之遙控性能，而完全不需額外費用。

- 加裝比例式模塊後可輸出模擬量信號 (需另行收費)

比例輸出0-10V標準規格

- 2祇1000萬次機械壽命的5檔段落感搖杆

純比例式搖杆，絕無觸點式開關接觸不良之故障

- 6祇功能按鍵

- 4祇三位置/兩位置旋轉開頭

- 輕巧的頸掛式設計，適合亞洲人的人體工學

- 三段式電池電壓警示裝置，在電壓不足時能自行切斷電路。

- 安全鑰匙開關旋鈕

- 加強型看門狗自動停止裝置

- 訊號搜尋及頻偏自動追蹤電路

- 防止電源突斷對策

- 可編程式繼電器輸出

- 3超外差接收電路

- LED及信號燈輸出

- 多種功能及參數可通過電腦接口設定

- 可根據用戶需要進行免費設定

安全特徵:

控制距離: 可達100米

安全碼: 43億種以上出廠永不重複

漢明碼: >4

使用溫度: -40°C至+85°C(不考慮電池耐溫)

防護等級: IP65

發射器電源: 直流6V (4節5號鹼性電池)

接收器電源: 交流380V/220V或直流12V/24V

輸出觸點容量: 5安培全密封式繼電器輸出 (使用交流250V/10A繼電器, 5安培保險絲)。

比例輸出: 0-10V



標準配置:

- 發射器1祇(含背帶)
- 接收機1部
- 接收機附3米長防拉電纜
- 操作及維護手冊1本

適用於:雙鉤多速、多功能及比例式行程及各種複雜功能的工業控制遙控用。

F24-60 FEATURES

- With ratio module, analog signals can be output (additional costs). Ratio output: standard 0-10V
- 2 five steps of 10 million times mechanical life Pure proportion joystick without fault of poor contact
- 6 function keys
- 4 three positions/two positions rotating switches
- Lightweight and neck hanging design for Asian ergonomics
- With 3 steps battery voltage alarm device, the power is cut off during low power.
- Safety key switch
- Enhanced watch-dog circuit with automatically stop device
- Signal search and frequency automatic tracking circuit
- Prevent power from sudden breaking
- Programmable relays outputs
- 3 super heterodyne receiving circuits
- LED and indicator outputs
- Various functions and parameters can be set by computer interface
- Setting free up to users' requirements

Safety features:

Control distance is up to 100 meters

4.3 billion unique ID code

Hamming code distance: >4

Temperature range: -40°C~+85°C

Enclosure protection class: IP 65

Transmitter power: 6V DC (4 AA batteries)

Receiver power: 380V/220V, or 12V/24V DC.

Output contact capacity: 5A sealed relay output (AC 250V/10A relays, 5A fuse contacts).

Ratio outputs: 0-10V

Standard Configuration:

- One transmitter
- One receiver
- Receiver with 3 meters cable
- Operation and maintenance manual

Application: Double-hook, multi-speed, multifunctional and proportional crane and complex function of industrial remote control

